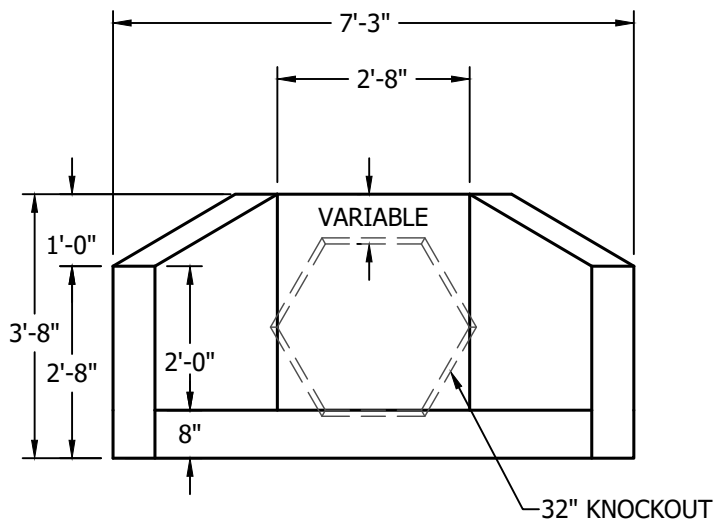
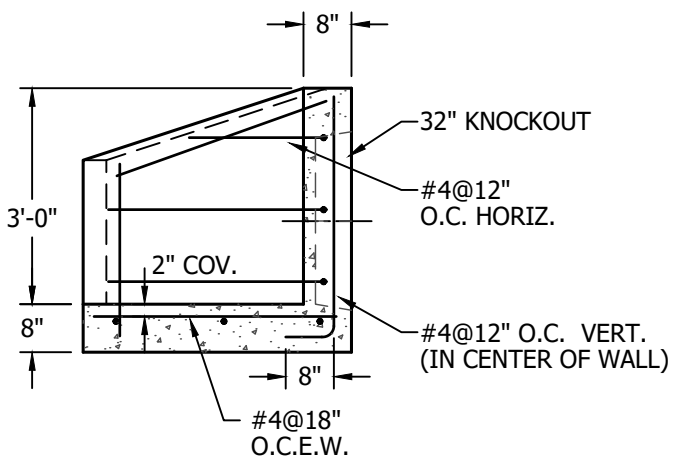


PLAN
N.T.S.



FRONT VIEW
N.T.S.



SECTION A-A
N.T.S.

GENERAL NOTES:

1. DESIGN IS IN ACCORDANCE WITH AASHTO STANDARD SPECIFICATIONS.
2. GEOTECHNICAL DESIGN DATA
 - 2.1 RETAINED SOIL FRICTION ANGLE 32°.
 - 2.2 FOUNDATION SOIL FRICTION ANGLE 32°.
 - 2.3 SOIL DENSITY: 120 pcf
 - 2.4 ALLOWABLE SERVICE LOAD BEARING PRESSURE: 3,000psf
 - 2.5 COEFFICIENT OF SLIDING FRICTION: 0.5
3. CONCRETE STRENGTH. $f'_c = 5,000\text{psi}$ @ 28 DAYS.
4. REINFORCING STEEL - ASTM A615, GRADE 60.
5. MATERIALS AND MANUFACTURING SHALL CONFORM TO AASHTO STANDARDS.
6. LIFTING AND HANDLING SHALL CONFORM TO OSHA STANDARDS.

WEIGHT
4,780 POUNDS



276 Clove Road
Salisbury Mills, New York, 12577
www.arconcrete.com
845-562-0640

**3 FT. CONCRETE HEADWALL
W/ 32" KNOCKOUT
STOCK**

CONTRACTOR:

DATE: 5/18/2021
REV.: 11/20/2023
DWN.BY: A&R LLC
DWG. NO.: AR-STOCK3FT