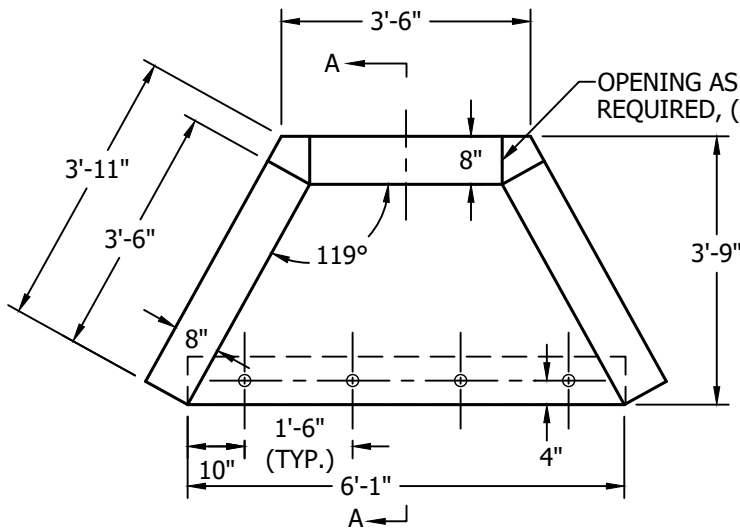
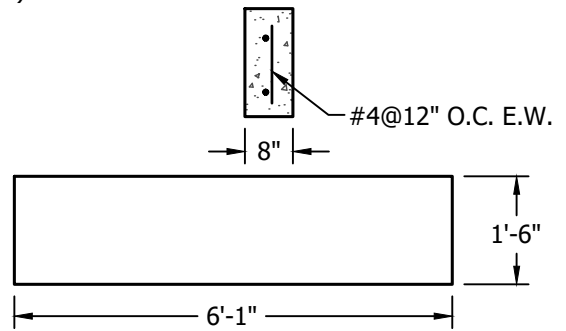


CUTOFF WALL NOTE:

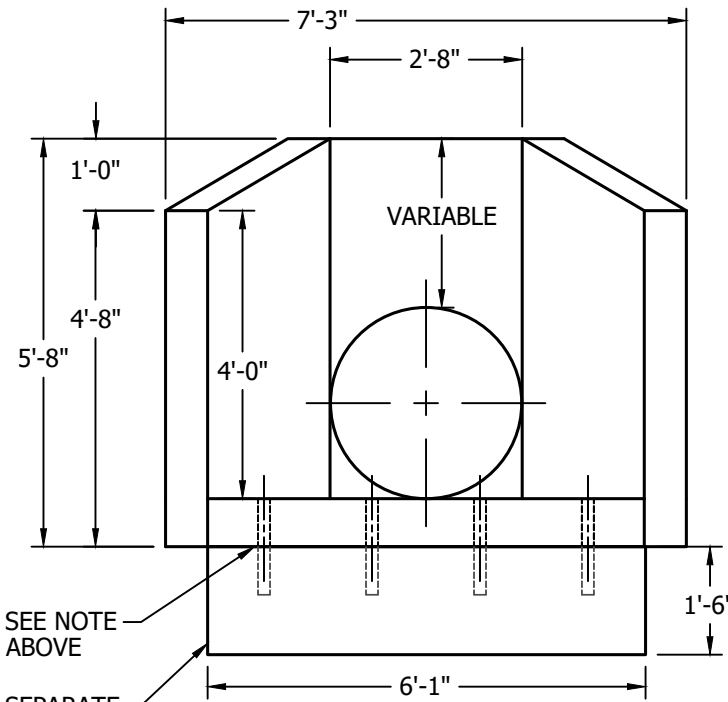
2" P.V.C. SLEEVES CAST INTO BASE AND SHALL BE USED AS GUIDES FOR DRILLING AND DOWELING (#4 BARS) INTO SEPARATE CUT-OFF WALL, 12" DEEP, BY CONTRACTOR IN FIELD. DOWEL BARS TO BE SUPPLIED AND INSTALLED BY CONTRACTOR IN FIELD.



PLAN
N.T.S.

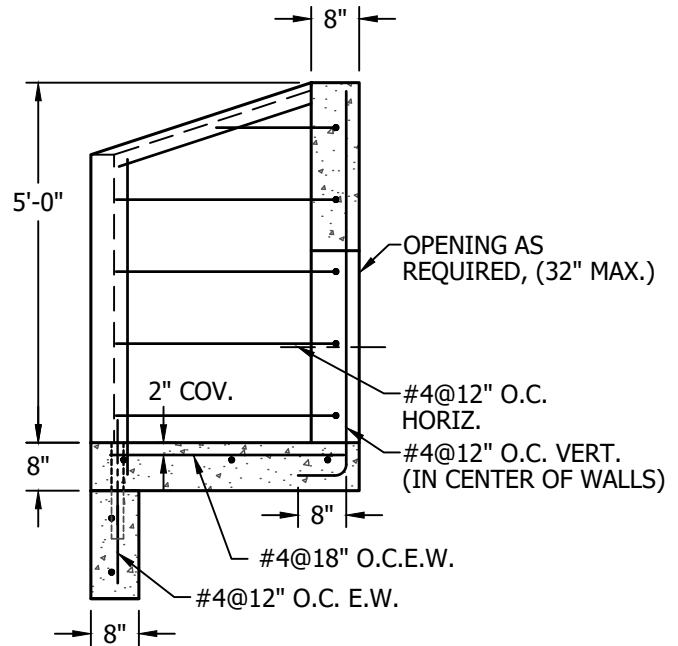


CUTOFF WALL
N.T.S.



SEE NOTE ABOVE
SEPARATE CUT-OFF WALL (OPTIONAL)

FRONT VIEW
N.T.S.



SECTION A-A
N.T.S.

GENERAL NOTES:

1. DESIGN IS IN ACCORDANCE WITH AASHTO STANDARD SPECIFICATIONS.
2. GEOTECHNICAL DESIGN DATA
 - 2.1 RETAINED SOIL FRICTION ANGLE 32°.
 - 2.2 FOUNDATION SOIL FRICTION ANGLE 32°.
 - 2.3 SOIL DENSITY: 120 pcf
 - 2.4 ALLOWABLE SERVICE LOAD BEARING PRESSURE: 3,000psf
 - 2.5 COEFFICIENT OF SLIDING FRICTION: 0.5
3. CONCRETE STRENGTH. $f'_c = 5,000\text{psi}$ @ 28 DAYS.
4. REINFORCING STEEL - ASTM A615, GRADE 60.
5. MATERIALS AND MANUFACTURING SHALL CONFORM TO AASHTO STANDARDS.
6. LIFTING AND HANDLING SHALL CONFORM TO OSHA STANDARDS.

WEIGHTS:

HEADWALL - 7,000#
CUTOFF WALL - 905#



276 Clove Road
Salisbury Mills, New York, 12577
www.arconcrete.com
845-562-0640

**5 FT. CONCRETE HEADWALL
W/ 32" (MAX.) OPENING
(CUTOFF WALL OPTIONAL)**

CONTRACTOR:
--

DATE: 5/18/2021

REV.: 11/20/2023

DWN.BY: A&R LLC

DWG. NO.:
AR-STANDARD5FT