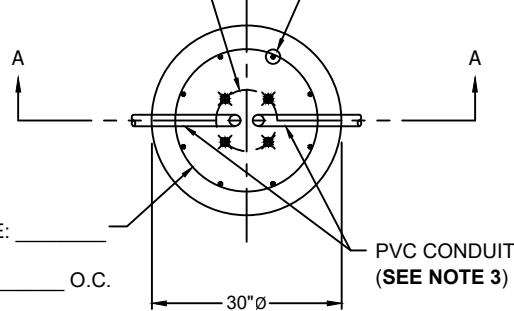
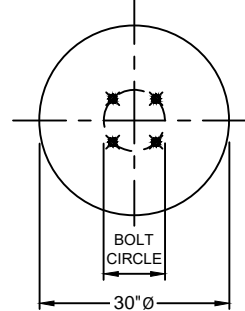


TOTAL UNITS REQUIRED: \_\_\_\_\_

BOLT CIRCLE (AS REQUIRED) REBAR SIZE: \_\_\_\_\_ QTY: \_\_\_\_\_  
EQUALLY SPACED

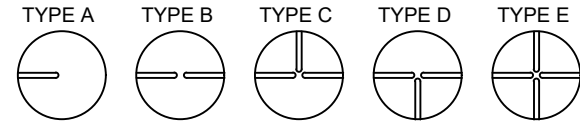


PLAN VIEW  
NTS



BOLT CIRCLE PLAN VIEW  
NTS

**\* SEE NOTE 3**



CONTRACTOR NOTE:

CONTRACTOR TO PROVIDE NUMBER OF EACH POLE BASE LAYOUT  
REQUIRED FOR ORDER. (PLEASE USE ABOVE SCHEMATIC)

**\*POLE BASE INFO TABLE**

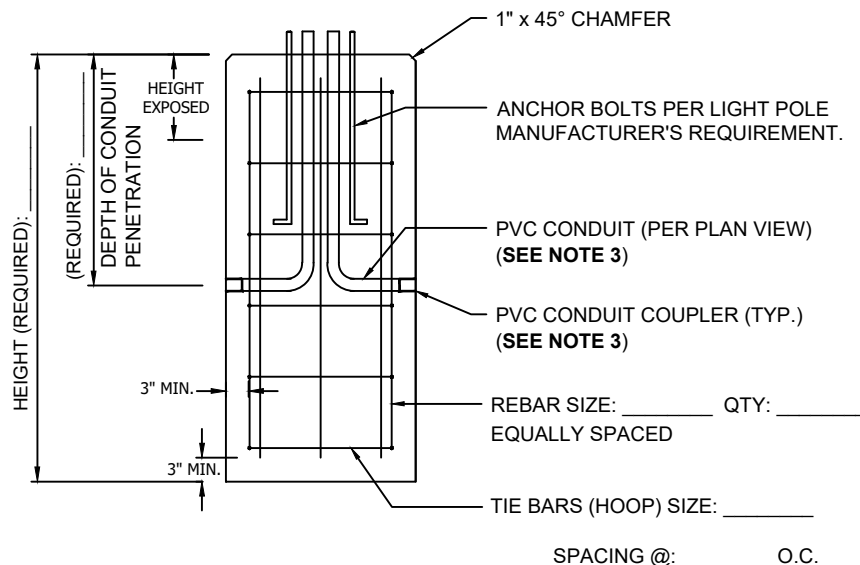
PVC CONDUIT SIZE:	
ANCHOR BOLT SIZE:	
BOLT CIRCLE FOR ANCHORS:	
BOLT/CONDUIT PROJECTION:	

\*NOTE: TABLE MUST BE COMPLETED PRIOR TO PRODUCTION RELEASE.

GENERAL NOTES:

- 1) CONCRETE TO TEST 4,000 PSI AT 28 DAYS.
- 2) REINFORCING STEEL PER ASTM A615, GRADE 60, UNCOATED BLACK BARS.
- 3) IF SUPPLIED BY CONTRACTOR, ANCHOR BOLTS, BOLT TEMPLATE AND/OR **UNASSEMBLED** CONDUIT TO BE DELIVERED TO A&R PRIOR TO FABRICATION. STRUCTURES WILL NOT BE SCHEDULED FOR PRODUCTION UNTIL ALL COMPONENTS ARE AT A&R PLANT.

CONTRACTOR NOTES/COMMENTS:



SECTION A-A  
NTS

A&R JOB #: \_\_\_\_\_

COORDINATOR: \_\_\_\_\_

NOTE: This form is also a cut sheet. By signing below,  
contractor approves release for production.

X \_\_\_\_\_

CONTACT: \_\_\_\_\_

PHONE: \_\_\_\_\_



276 Clove Road  
Salisbury Mills, New York, 12577  
www.arconcrete.com  
845-562-0640

PRECAST CONCRETE LIGHT POLE BASE  
30" Ø

CONTRACTOR:

DATE:

REV.:

DWN.BY: A&R LLC

DWG. NO.: LPB30