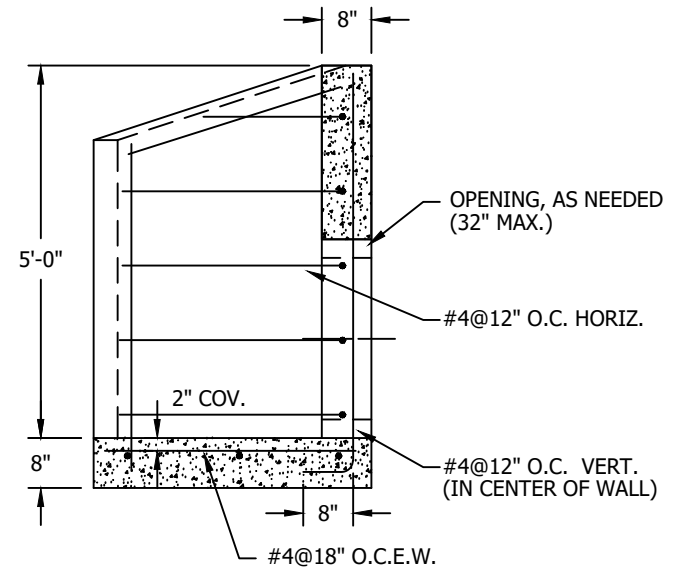
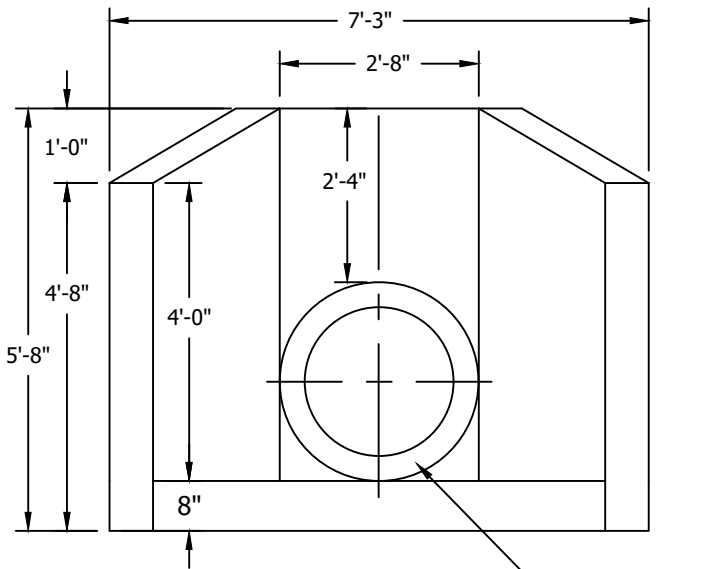


PLAN
 $\frac{3}{8}'' = 1'-0''$



SECTION A-A
 $\frac{3}{8}'' = 1'-0''$



ELEVATION
 $\frac{3}{8}'' = 1'-0''$

24" I.D. PIPE
 32" KNOCKOUT

WEIGHT
6860 POUNDS

NOTES:

- 1) CONCRETE TO TEST 5,000 PSI AT 28 DAYS.
- 2) DESIGN IN ACCORDANCE WITH AASHTO STANDARD SPECIFICATIONS.
- 3) GEOTECHNICAL DESIGN DATA:
 - 3.1 RETAINED SOIL FRICTION ANGLE 32°.
 - 3.2 FOUNDATION SOIL FRICTION ANGLE 32°.
 - 3.3 SOIL DENSITY: 120 pcf
 - 3.4 ALLOWABLE SERVICE LOAD BEARING PRESSURE: 3,000psf
 - 3.5 COEFFICIENT OF SLIDING FRICTION: 0.5
- 4) REINFORCING STEEL - ASTM A615 - GRADE 60.
- 5) MATERIALS AND MANUFACTURING SHALL CONFORM TO AASHTO STANDARDS.
- 6) LIFTING AND HANDLING SHALL CONFORM TO OSHA STANDARDS.



276 Clove Road
 Salisbury Mills, New York, 12577
 www.arconcrete.com
 845-562-0640

5' CONCRETE HEADWALL	DATE: 9/1/2022
	REV.: ---
CONTRACTOR: ---	DWN.BY: A&R LLC
	DWG. NO.: HW5FT