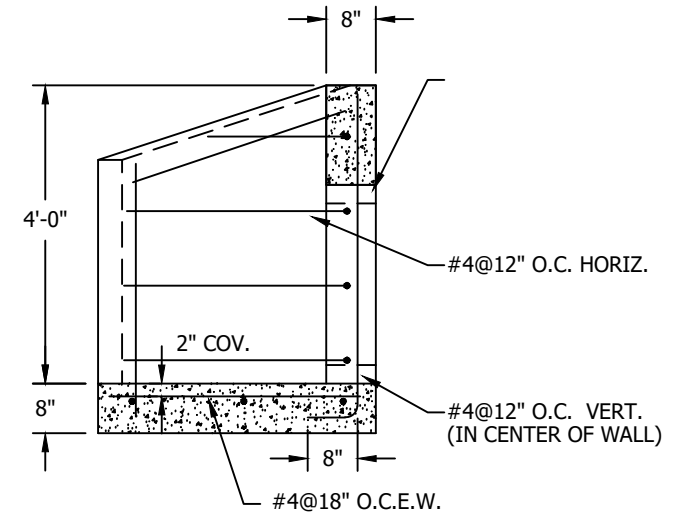
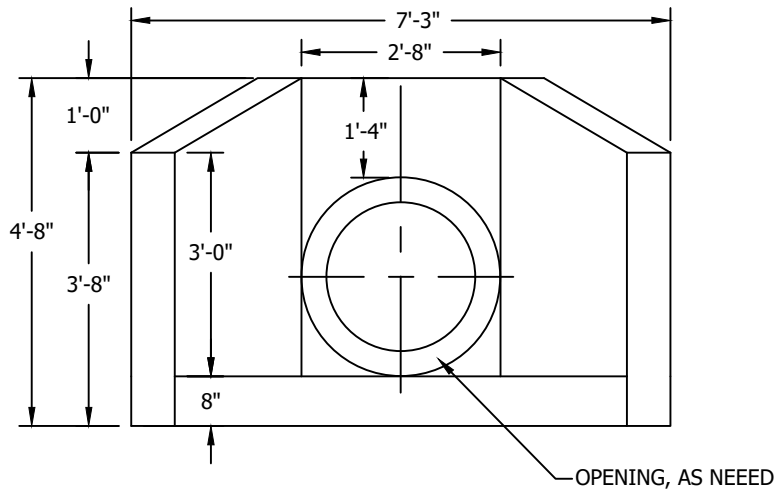


PLAN
1/8" = 1'-0"



SECTION A-A
1/8" = 1'-0"



ELEVATION
1/8" = 1'-0"

WEIGHT
5820 POUNDS

NOTES:

- 1) CONCRETE TO TEST 5,000 PSI AT 28 DAYS.
- 2) DESIGN IN ACCORDANCE WITH AASHTO STANDARD SPECIFICATIONS.
- 3) GEOTECHNICAL DESIGN DATA:
 - 3.1 RETAINED SOIL FRICTION ANGLE 32°.
 - 3.2 FOUNDATION SOIL FRICTION ANGLE 32°.
 - 3.3 SOIL DENSITY: 120 pcf
 - 3.4 ALLOWABLE SERVICE LOAD BEARING PRESSURE: 3,000psf
 - 3.5 COEFFICIENT OF SLIDING FRICTION: 0.5
- 4) REINFORCING STEEL - ASTM A615 - GRADE 60.
- 5) MATERIALS AND MANUFACTURING SHALL CONFORM TO AASHTO STANDARDS.
- 6) LIFTING AND HANDLING SHALL CONFORM TO OSHA STANDARDS.



276 Clove Road
Salisbury Mills, New York, 12577
www.arconcrete.com
845-562-0640

4' CONCRETE HEADWALL	DATE:	9/1/2022
	REV.:	---
	DWN. BY:	A&R LLC
	DWG. NO.:	HW4FT
CONTRACTOR:	---	