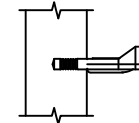


PLAN VIEW

3/8" = 1'-0"

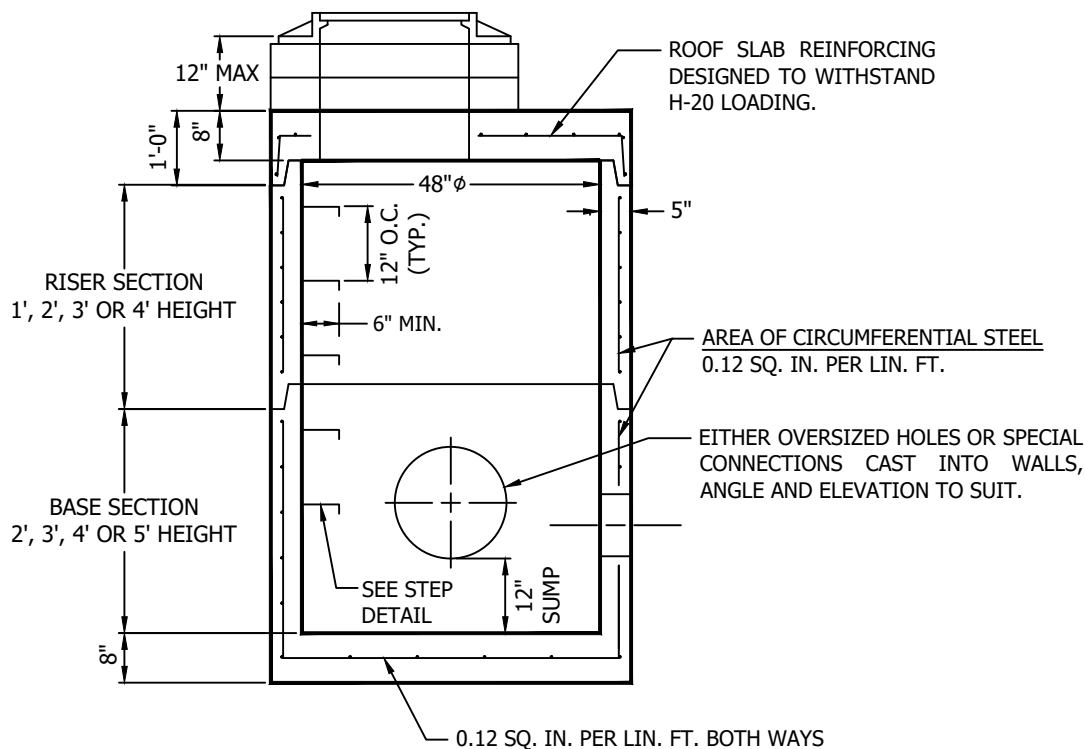
MA INDUSTRIES MODEL #PS2-PF
STEEL REINFORCED COPOLYMER
POLYPROPYLENE PLASTIC STEP.
CONFORMS TO NYS DOT.



STEP DETAIL

NTS

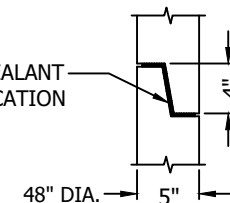
FRAME & GRATE, MASONRY ADJUSTMENT
TO GRADE BY CONTRACTOR IN THE FIELD.



SECTION VIEW

3/8" = 1'-0"

BUTYL RUBBER JOINT SEALANT
PER FEDERAL SPECIFICATION
NO. SS-S-00210.




JOINT DETAIL

NTS

NOTES:

- 1) CONCRETE TO TEST 4000 PSI AT 28 DAYS.
- 2) ALL MATERIAL IN STRICT COMPLIANCE WITH ASTM C478, LATEST REVISION.
- 3) MAX TWO (2) LIFTING HOLES IN EACH SECTION TO FACILITATE HANDLING.
- 4) ALL COMPONENTS ARE MANUFACTURED IN ACCORDANCE WITH NYS DOT SPECIFICATIONS.

WEIGHT
____ POUNDS

	276 Clove Road Salisbury Mills, New York, 12577 www.arconcrete.com 845-562-0640
	DATE: 2/9/2021
48Ø MANHOLE	REV.: ---
CONTRACTOR: ---	DWN.BY: A&R LLC
	DWG. NO.: 48MH