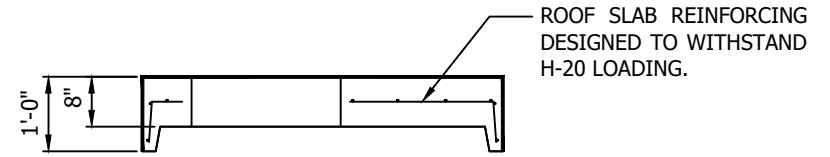


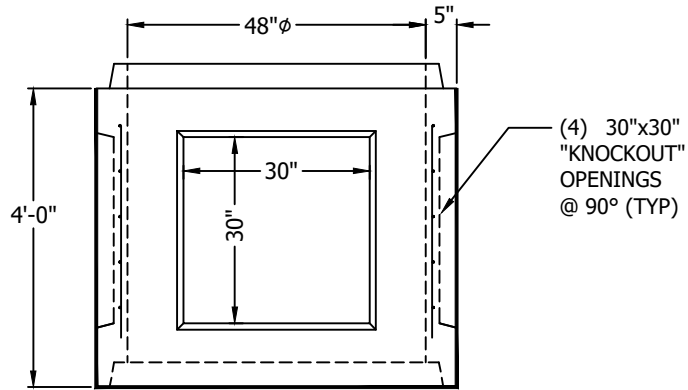
STANDARD RISER SECTION

3/8" = 1'-0"



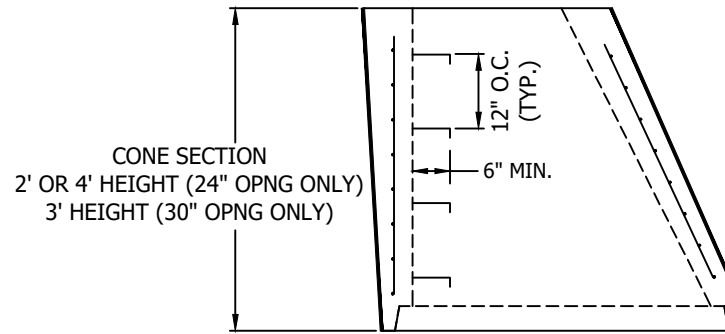
STANDARD ROOF SLAB

3/8" = 1'-0"



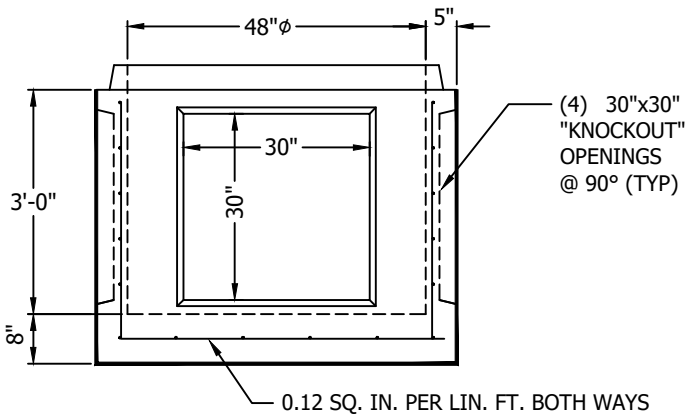
KNOCKOUT RISER SECTION

3/8" = 1'-0"



STANDARD CONE SECTION

3/8" = 1'-0"



KNOCKOUT BASE SECTION

3/8" = 1'-0"

NOTES:

- 1) CONCRETE TO TEST 4000 PSI AT 28 DAYS.
- 2) ALL MATERIAL IN STRICT COMPLIANCE WITH ASTM C478, LATEST REVISION.
- 3) MAX TWO (2) LIFTING HOLES IN EACH SECTION TO FACILITATE HANDLING.
- 4) ALL COMPONENTS ARE MANUFACTURED IN ACCORDANCE WITH NYS DOT SPECIFICATIONS.

WEIGHT
____ **POUNDS**

| | | | |
|----------------------|--|-----------|---------|
| | 276 Clove Road Salisbury Mills, New York, 12577 www.arconcrete.com 845-562-0640 | | |
| | DATE: | 8/30/2022 | |
| 48φ KNOCKOUT MANHOLE | | REV.: | --- |
| | | DWN. BY: | A&R LLC |
| CONTRACTOR: | --- | DWG. NO.: | 48KOMH |