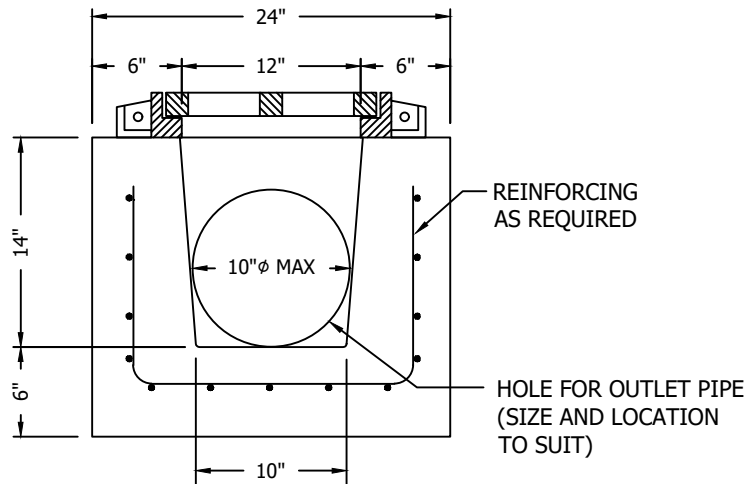
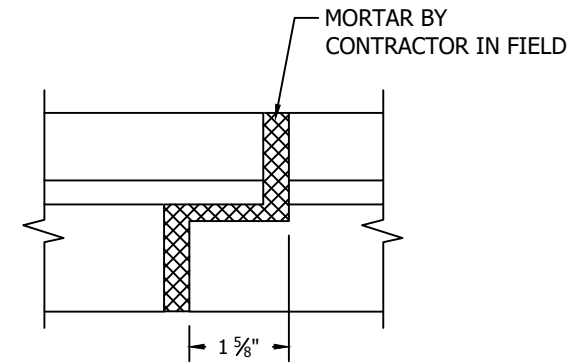


PLAN
NTS



SECTION A-A
NTS




JOINT DETAIL
NTS

NOTES:

- 1) CONCRETE TO TEST 5,000 PSI AT 28 DAYS.
- 2) TRENCH TRAIN FRAMES AND GRATES TO BE INSTALLED ON TOP OF WALLS BY CONTRACTOR IN FIELD OR CAST IN BY A&R CONCRETE PRODUCTS, LLC.
- 3) OVERSIZED HOLES FOR OUTLET PIPES AND INCOMING TRENCH TO BE CAST BY A&R CONCRETE PRODUCTS, LLC.

WEIGHT
____ POUNDS

	276 Clove Road Salisbury Mills, New York, 12577 www.arconcrete.com 845-562-0640
	DATE: 8/31/2022
12"W x 14"H TAPERED TRENCH DRAIN	REV.: ---
CONTRACTOR: ---	DWN.BY: A&R LLC
	DWG. NO.: 12x14TD