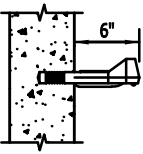


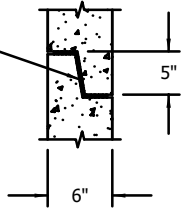
CONTRACTOR:
PROJECT:
MH OP'G SIZE: AS REQUIRED (PER PLANS)

STEEL REINFORCED COPOLYMER
POLYPROPYLENE PLASTIC STEP
CONFORMS TO N.Y.S.D.O.T.



STEP DETAIL

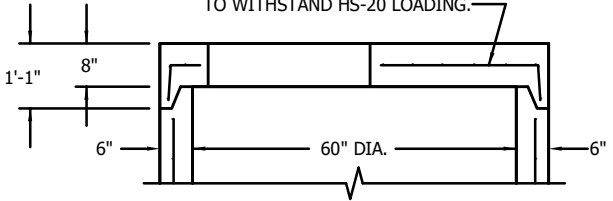
BUTYL RUBBER JOINT SEALANT PER FED'L.
SPEC. NO. SS-S-00210.



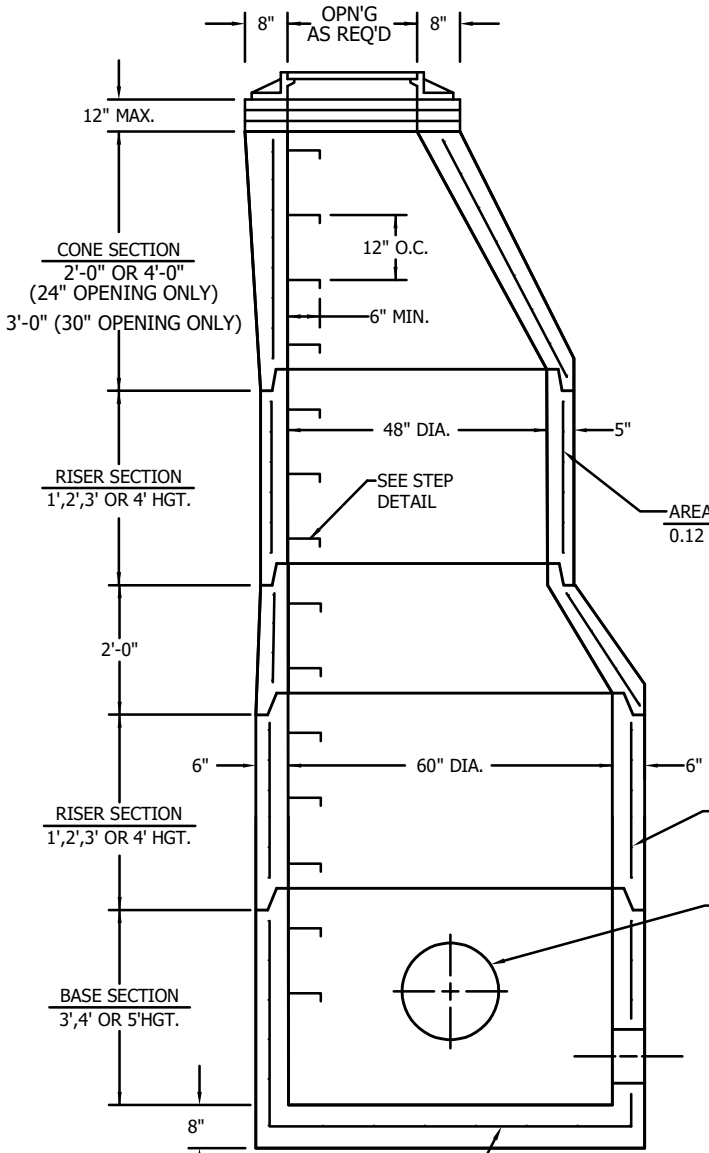
JOINT DETAIL
(TYP.)

FRAME & GRATE, MASONRY ADJUSTMENT TO GRADE BY CONTRACTOR IN THE FIELD.

ROOF SLAB REINFORCING DESIGNED TO WITHSTAND HS-20 LOADING.



SECTION WITH ROOF SLAB



SECTION WITH REDUCER
5' DIAMETER MANHOLES

AREA OF CIRCUMFERENTIAL STEEL
0.12 SQ. IN. PER LIN. FT.

AREA OF CIRCUMFERENTIAL STEEL
0.15 SQ. IN. PER LIN. FT.

EITHER OVERSIZED HOLES OR SPECIAL CONNECTIONS
CAST INTO WALLS, ANGLE AND ELEVATION TO SUIT.

0.15 SQ. IN. PER LIN. FT. BOTH WAYS.

NOTES:

1. ALL MATERIAL IN STRICT CONFORMANCE WITH ASTM C478, LATEST REVISION.
2. CONCRETE TO TEST 4,000 PSI AT 28 DAYS.
3. MAX. TWO(2) LIFTING HOLES IN EACH SECTION TO FACILITATE HANDLING.
4. ALL COMPONENTS ARE MANUFACTURED IN ACCORDANCE WITH NYSDOT SPECIFICATIONS

	7 Ruscitti Road New Windsor, New York, 12553 www.arconcrete.com 845-562-0640	
	60" DIAMETER MANHOLE SUBMITTAL DRAWING.	
DATE:	DWN BY: A&R LLC	DWG. NO. NY60MH GenSub