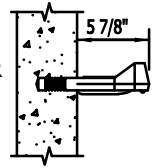


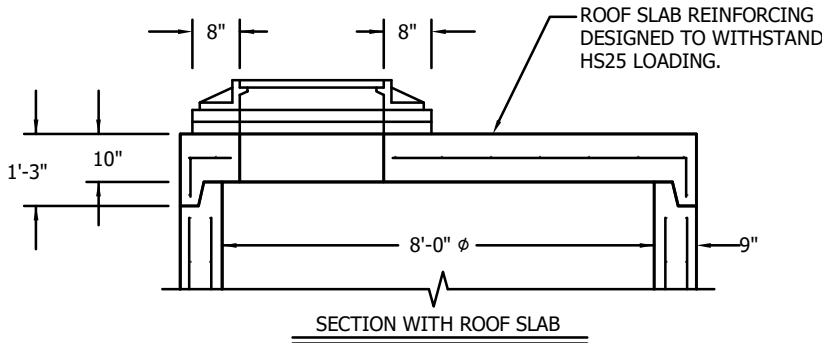
**MANHOLE REQUIREMENT CHECKLIST:**

PIPE TO MH CONNECTOR -	<input type="checkbox"/> HOLE THRU <input type="checkbox"/> BOOT (KOR-N-SEAL) <input type="checkbox"/> EONSEAL (EQ. TO A-LOK)
COATING -	<input type="checkbox"/> YES; <input type="checkbox"/> INTERIOR, <input type="checkbox"/> BITUMINOUS <input type="checkbox"/> EXTERIOR, <input type="checkbox"/> EPOXY <input type="checkbox"/> NO
ROOF OPENING -	<input type="checkbox"/> 24" Dia.; <input type="checkbox"/> 30" Dia.
6" BASE EXT. REQUIRED?	<input type="checkbox"/> YES; <input type="checkbox"/> NO

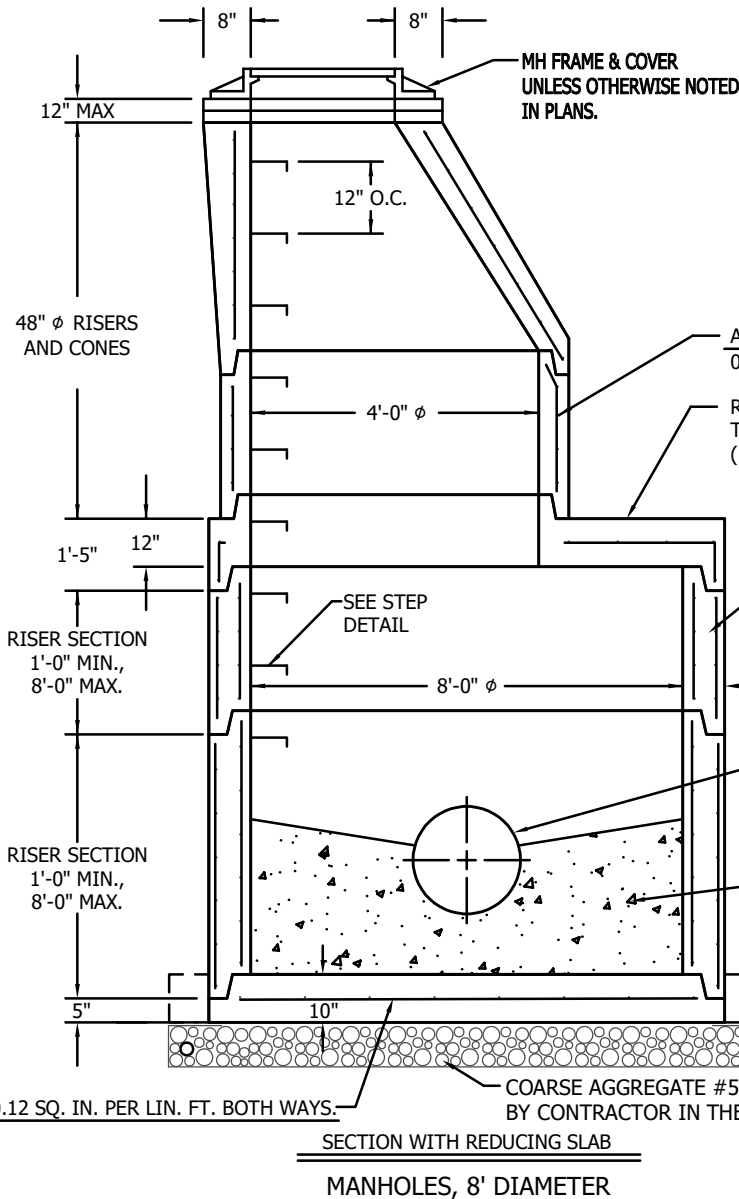
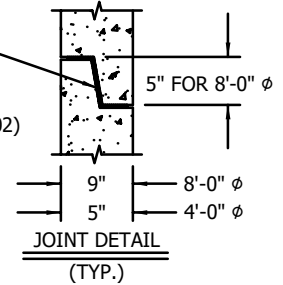
MA INDUSTRIES MODEL #PS2-PF  
STEEL REINFORCED COPOLYMER  
POLYPROPYLENE PLASTIC STEP (OR  
EQUAL) PER ASTM D2146 TYPE II,  
GRADE 16906.



STEP DETAIL



BUTYL RUBBER JOINT  
SEALANT PER FED'L.  
SPEC. NO. SS-S-00210.  
(CON SEAL MODEL C-102)



**NOTES:**

- 1) DESIGN IN ACCORDANCE WITH AASHTO 17TH ED.
- 2) LIVE LOAD = A-20 (AASHTO HS25)
- 3) EARTH FILL FOR DESIGN = 24"
- 4) CONCRETE STRENGTH = 4,500 PSI
- 5) REINFORCING STEEL - ASTM A615, GRADE 60
- 6) WELDED WIRE REINFORCING - ASTM A1064, GRADE 65 SMOOTH.
- 7) MATERIALS AND MANUFACTURING SHALL CONFORM TO ASTM C913.
- 8) LIFTING AND HANDLING SHALL CONFORM TO OSHA STANDARDS.

	7 Ruscitti Road New Windsor, New York, 12553 www.arconcrete.com 845-562-0640	
	96" DIAMETER MANHOLE SUBMITTAL DRAWING.	
DATE: 6/17/2022	DWN BY: A&R LLC	DWG. NO. AR-96MH