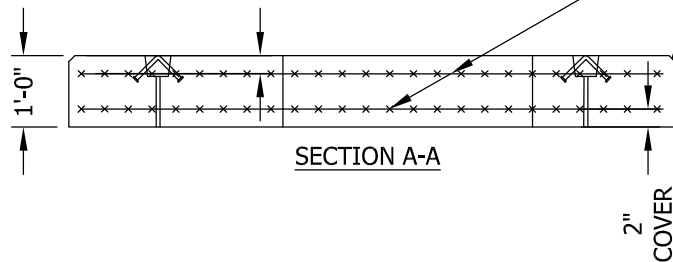


PLAN VIEW

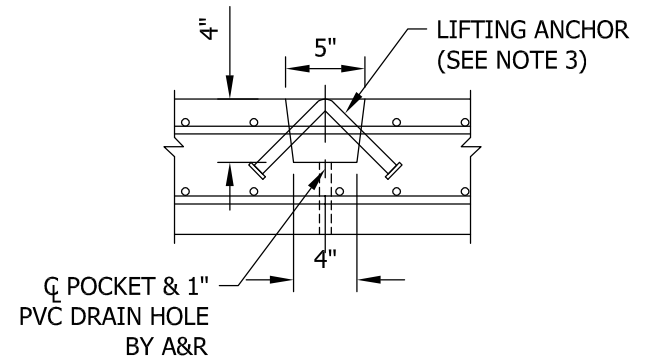


SECTION A-A

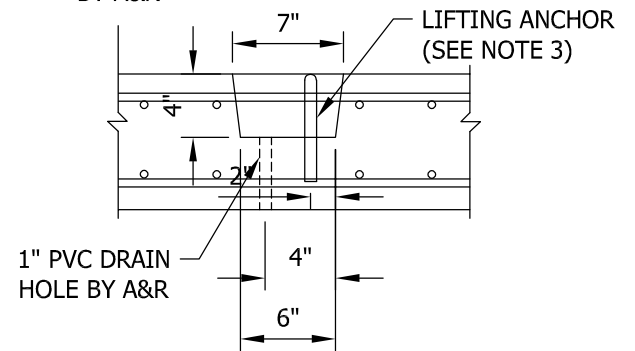
HEAVIEST LIFT = 8,500 LBS

#4 BARS @ 12" O.C./E.W.  
(TOP & BOTTOM LAYER)

1"x45° CHAMFER  
ALL AROUND TOP  
EDGE



POCKET & 1"  
PVC DRAIN HOLE  
BY A&R



1" PVC DRAIN  
HOLE BY A&R

LIFTING ANCHOR AND DRAIN DETAIL

GENERAL NOTES:

- 1) CONCRETE TO TEST 5,000 PSI AT 28 DAYS.
- 2) REINFORCING STEEL PER ASTM A615, GRADE 60 - BLACK BARS. 3" CLEAR ALL AROUND.
- 3) ALL LIFTING ANCHORS TO BE RECESSED & EACH LIFTING ANCHOR SHALL HAVE A WORKING CAPACITY OF 6,000 LBS.



7 Ruscitti Road  
New Windsor, New York, 12553  
www.arconcrete.com  
845-562-0640

PRECAST CONCRETE O&R TRANSFORMER PAD  
SIZE 75-500 kva (OD 8'-6"x7'-3"x12")

DATE:	12/13/2019
REV.:	9/17/2021
DWN. BY:	A&R LLC
DWG. NO.:	O&RPAD75-500