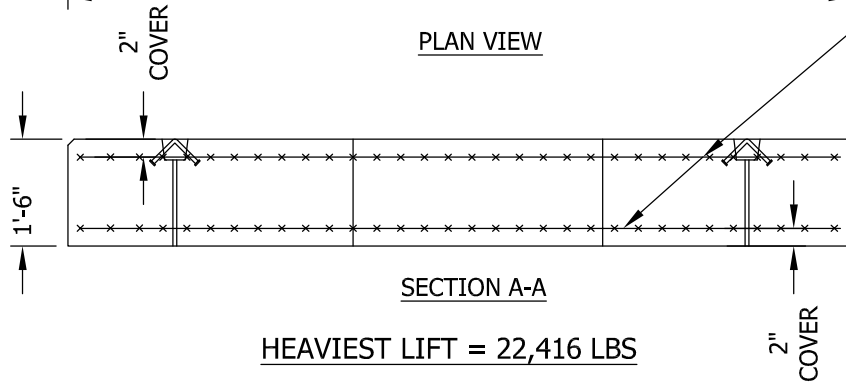


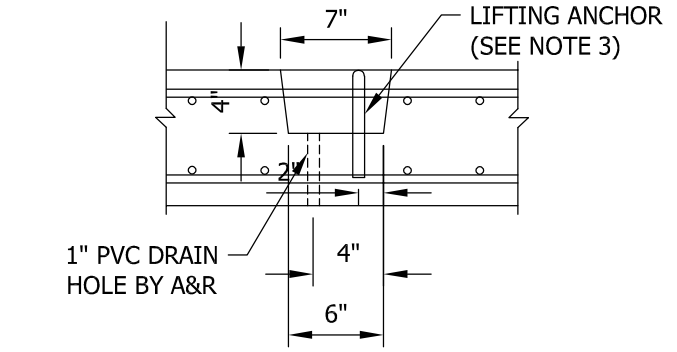
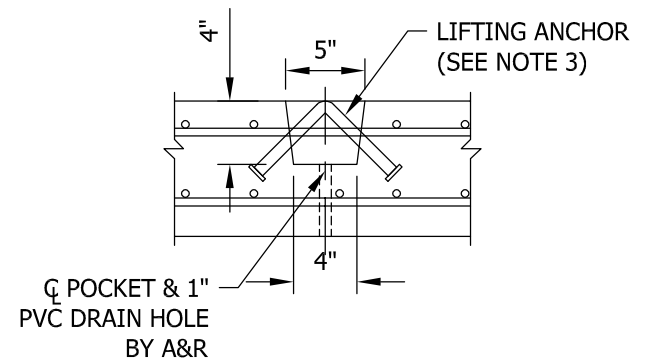
PLAN VIEW



SECTION A-A

HEAVIEST LIFT = 22,416 LBS

#4 BARS @ 12" O.C./E.W.
(TOP & BOTTOM LAYER)
1"x45° CHAMFER
ALL AROUND TOP
EDGE



LIFTING ANCHOR AND DRAIN DETAIL

GENERAL NOTES:

- 1) CONCRETE TO TEST 5,000 PSI AT 28 DAYS.
- 2) REINFORCING STEEL PER ASTM A615, GRADE 60 - BLACK BARS. 3" CLEAR ALL AROUND.
- 3) ALL LIFTING ANCHORS TO BE RECESSED & EACH LIFTING ANCHOR SHALL HAVE A WORKING CAPACITY OF 10,000 LBS.



7 Ruscitti Road
New Windsor, New York, 12553
www.arconcrete.com
845-562-0640

PRECAST CONCRETE O&R TRANSFORMER PAD
SIZE 1500-2500 kva (OD 11'-0"x9'-2"x18")

DATE:	9/17/2021
REV.:	
DWN. BY:	A&R LLC
DWG. NO.:	O&RPAD1500-25000