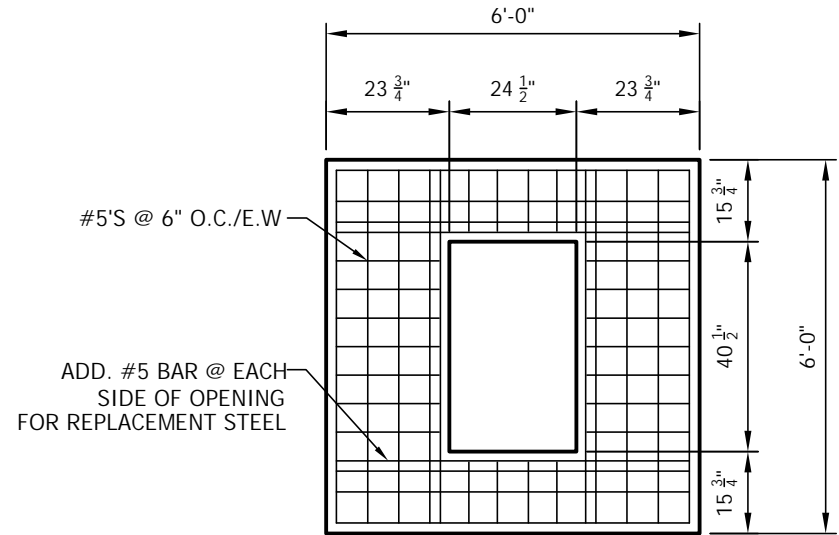


ROOF PLAN

(750-1000 KVA TRANSFORMER COVER)



ROOF PLAN

(TYPE 4 COVER)

GENERAL NOTES:

1. CONCRETE TO TEST 4,000 PSI AT 28 DAYS.
2. REINFORCING STEEL PER ASTM A615, GRADE 60 FOR REBAR AND PER ASTM A185 FOR WELDED WIRE FABRIC(W.W.F.).
3. KNOCKOUT OPENINGS TO BE 4" DEEP, LEAVING A 2" CONCRETE "SKIN".



7 Ruscitti Road  
 New Windsor, New York, 12553  
 www.arconcrete.com  
 845-562-0640

CENTRAL HUDSON PRECAST CONCRETE TRANSFORMER (ROOF OPTIONS)	DATE: 5/14/2018
	REV.:
	DWN.BY: A&R LLC
CONTRACTOR: CENTRAL HUDSON	DWG. NO.: AR-CenHudTMH500R1