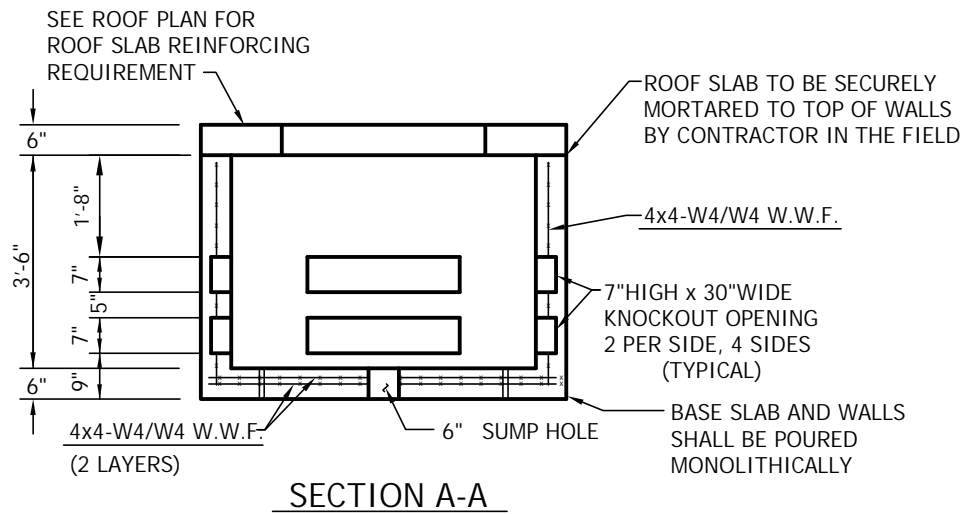


ROOF PLAN
(75-500 KVA TRANSFORMER COVER)



GENERAL NOTES:

1. CONCRETE TO TEST 4,000 PSI AT 28 DAYS.
2. REINFORCING STEEL PER ASTM A615, GRADE 60 FOR REBAR AND PER ASTM A185 FOR WELDED WIRE FABRIC(W.W.F.).
3. KNOCKOUT OPENINGS TO BE 4" DEEP, LEAVING A 2" CONCRETE "SKIN".



7 Ruscitti Road
New Windsor, New York, 12553
www.arconcrete.com
845-562-0640

CENTRAL HUDSON PRECAST CONCRETE TRANSFORMER MANHOLE	DATE: 5/14/2018
	REV.:
	DWN. BY: A&R LLC
CONTRACTOR: CENTRAL HUDSON	DWG. NO.: AR-CenHudTMH500